



Connecting people and place

Gemma Van Halderen

First Assistant Statistician
Population, Education & Data Integration Division

International Workshop on the Integration of
Statistical and Geospatial Information, Beijing

8 June 2014





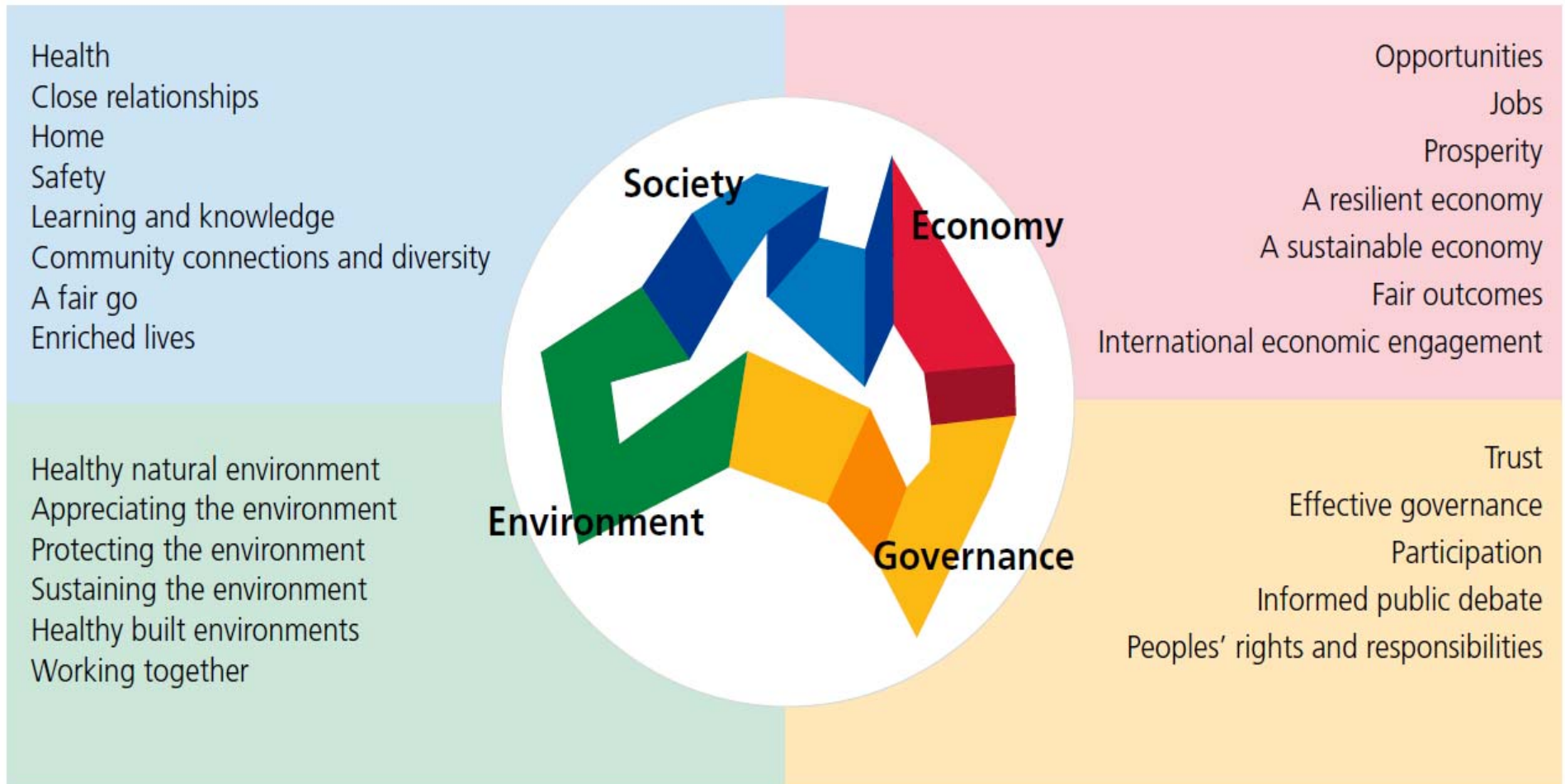
1. The World of Statistics
2. Plans for modernisation
3. Connecting statistics to place
4. Connecting the statistics and geospatial communities
5. Collaboration opportunities



We assist and encourage informed decision making, research and discussion within governments and the community, by leading a high quality, objective and responsive national statistical service.

Australian Bureau of Statistics Mission Statement







Measures of Australia's Progress

Is life in Australia getting better?

The MAP Dashboard

...by status

What is MAP? - video

Summary Brochure

Society

- [Health](#)
- [Close relationships](#)
- [Home](#)
- [Safety](#)
- [Learning and knowledge](#)
- [Community connections and diversity](#)
- [A fair go](#)
- [Enriched lives](#)

Economy

- [Opportunities](#)
- [Jobs](#)
- [Prosperity](#)
- [A resilient economy](#)
- [Enhancing living standards](#)
- [Fair outcomes](#)
- [International economic engagement](#)

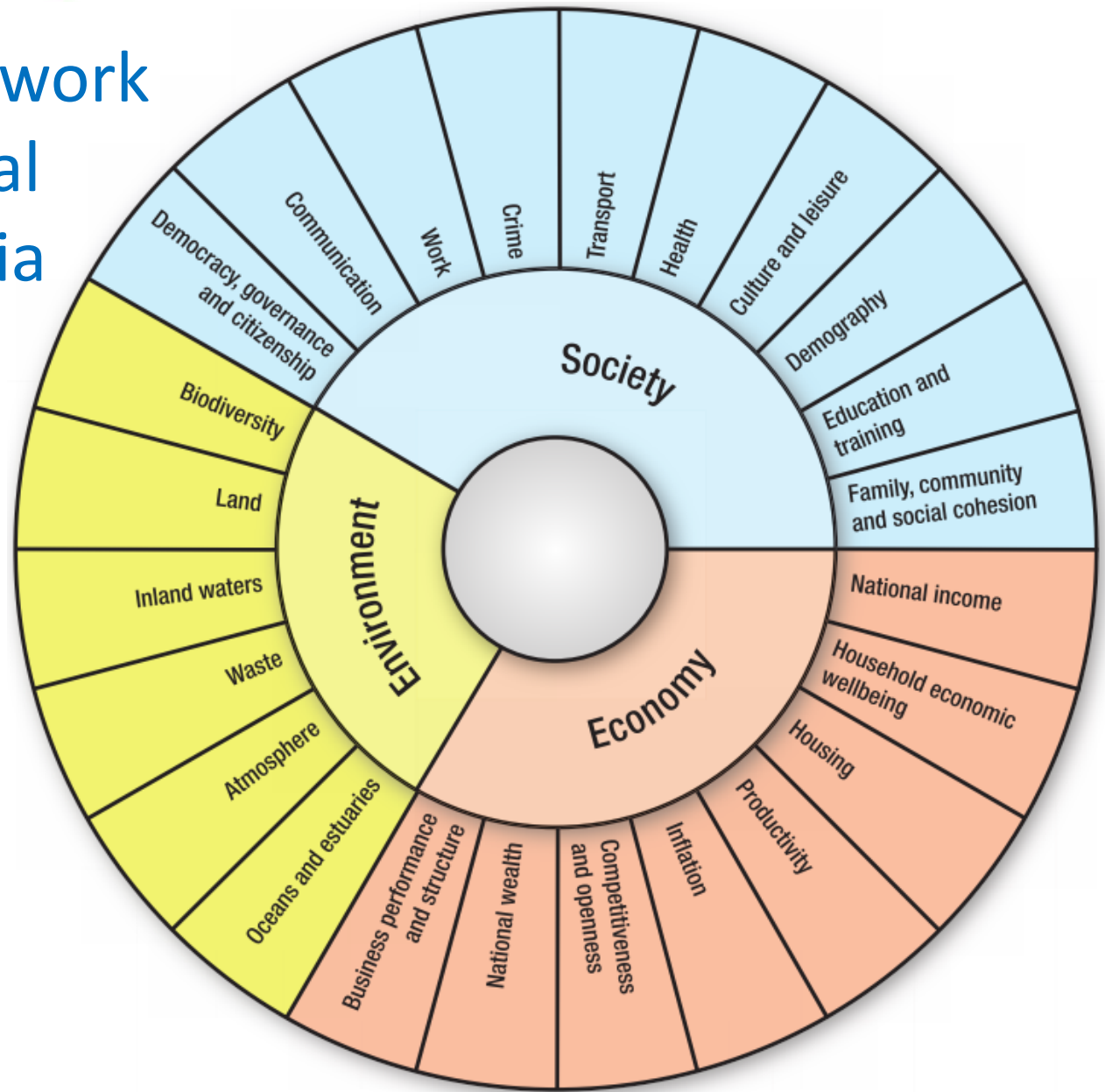
Environment

- [Healthy natural environment](#)
- [Appreciating the environment](#)
- [Protecting the environment](#)
- [Sustaining the environment](#)
- [Healthy built environments](#)
- [Working together for a healthy environment](#)

Governance

- [Trust](#)
- [Effective governance](#)
- [Participation](#)
- [Informed public debate](#)
- [People's rights and responsibilities](#)

Organising Framework Essential Statistical Assets for Australia



UN ESCAP

**Developing Capacity in Population and Social Statistics
Regional Framework for focussing efforts, coordinating training and
mobilizing donor support**

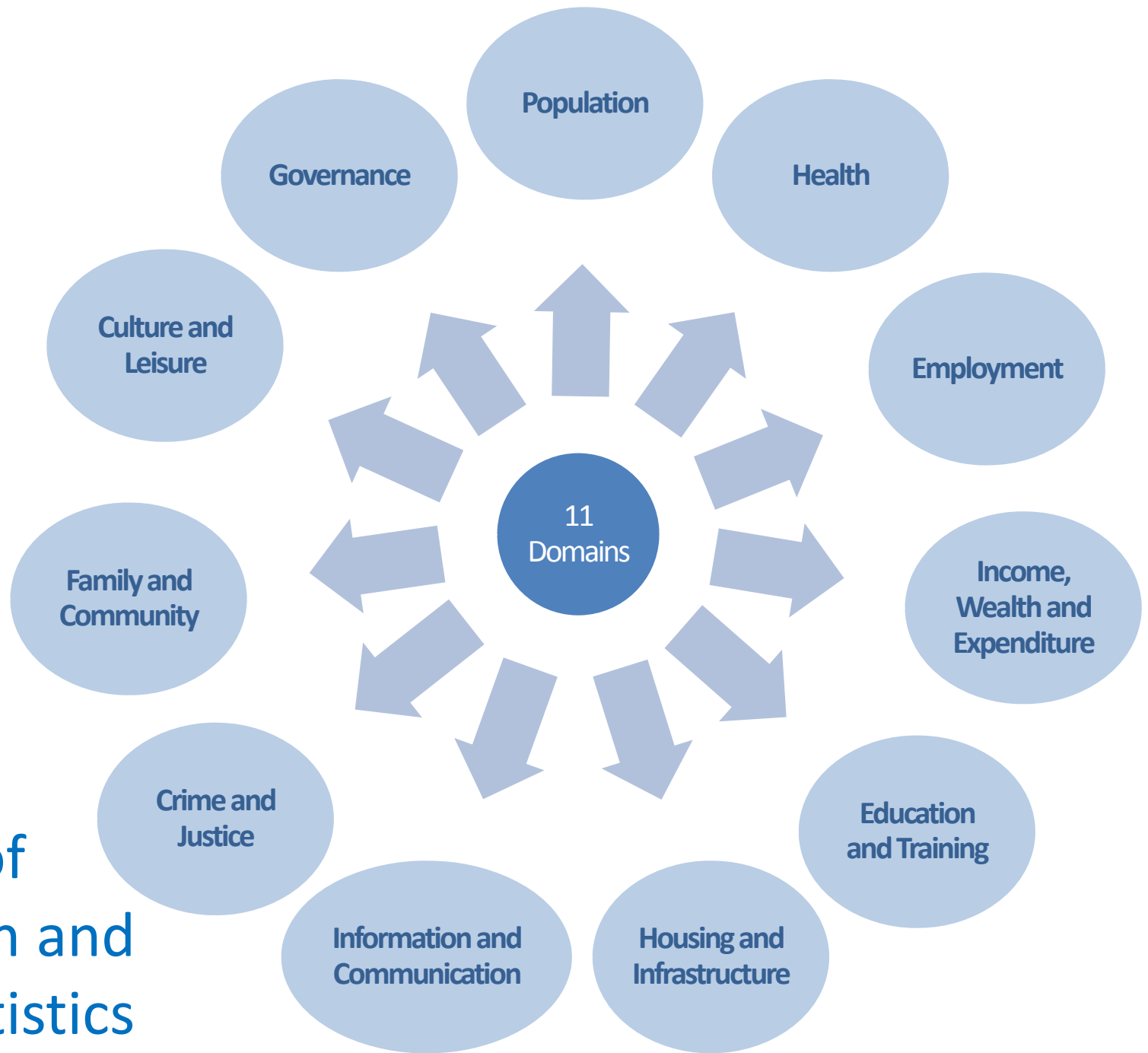
UN ESCAP Committee on Statistics Strategic Goal

To ensure all Countries in the ESCAP Region, by 2020, have the capability to provide an agreed basic range of population, economic, social and environment statistics. CST, 2nd Session, 2010

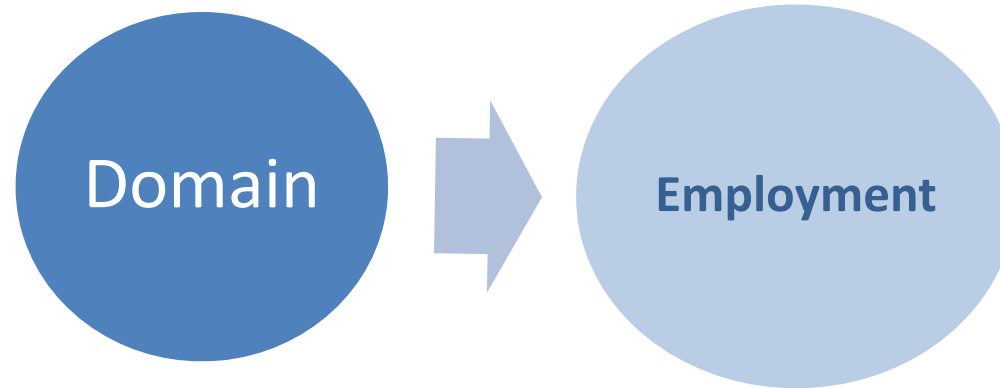
National and International Information Priorities

Population dynamics, human and social capital, individual wellbeing, societal progress, urbanization, security, distributional aspects of growth and development, Millennium Development Goals, Post-2015 Development Agenda, Rio+20 Sustainable Development Agenda

UN ESCAP Core Set of Population and Social Statistics



Articulate Broad Information Needs



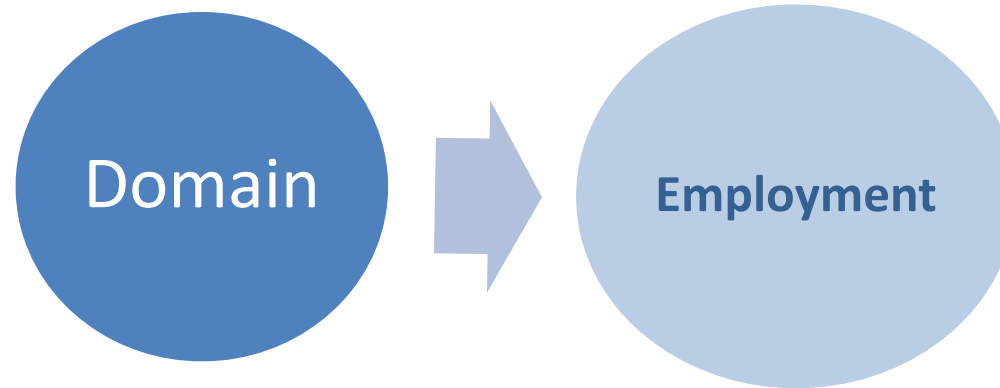
- Labour Force status of the population
- Labour underutilisation
- Earnings and wages
- Hours worked
- Unpaid work

- Occupational safety
- Strikes and lockouts
- Labour inspection
- Trade union membership
- Collective bargaining
- Social Protection

Benefits

- Focus on statistical themes rather than indicators
- Difficult to get agreement on indicators
- Can accommodate regional differences and priorities

Articulate Relevant Characteristics

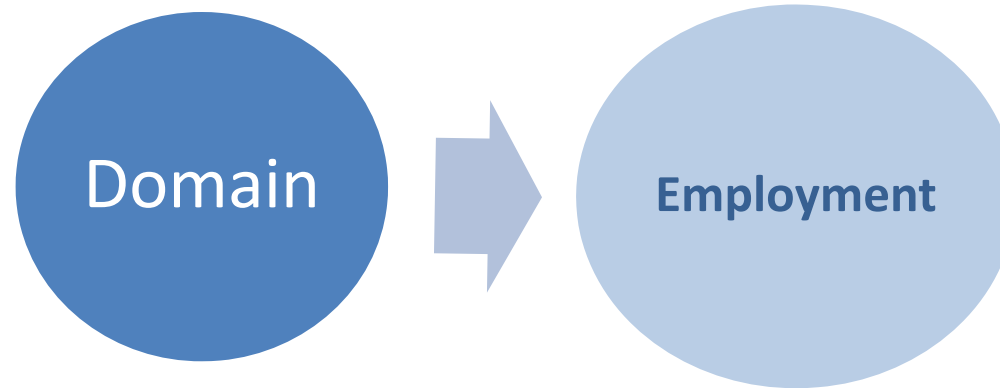


- Employment to population ratio
- Labour force participation
- Unemployment rate
- Earnings
- Actual hours worked
- No. of strikes, lockouts, & trade union members
- 'Green' jobs
- Social protection indicators

Benefits

- Can accommodate regional differences and priorities
- Focus on statistics rather than indicators
 - Difficult to get agreement on indicators
- Indicators give meaning to many countries
 - Understand indicators more than statistics?

Articulate Relevant Common Dis-aggregations



- Age
- Gender
- Occupation or skill level
- Industry
- Education level

- Employment status
- **Geography**
- Formal/informal
- Full/part time
- Residency status

Benefits

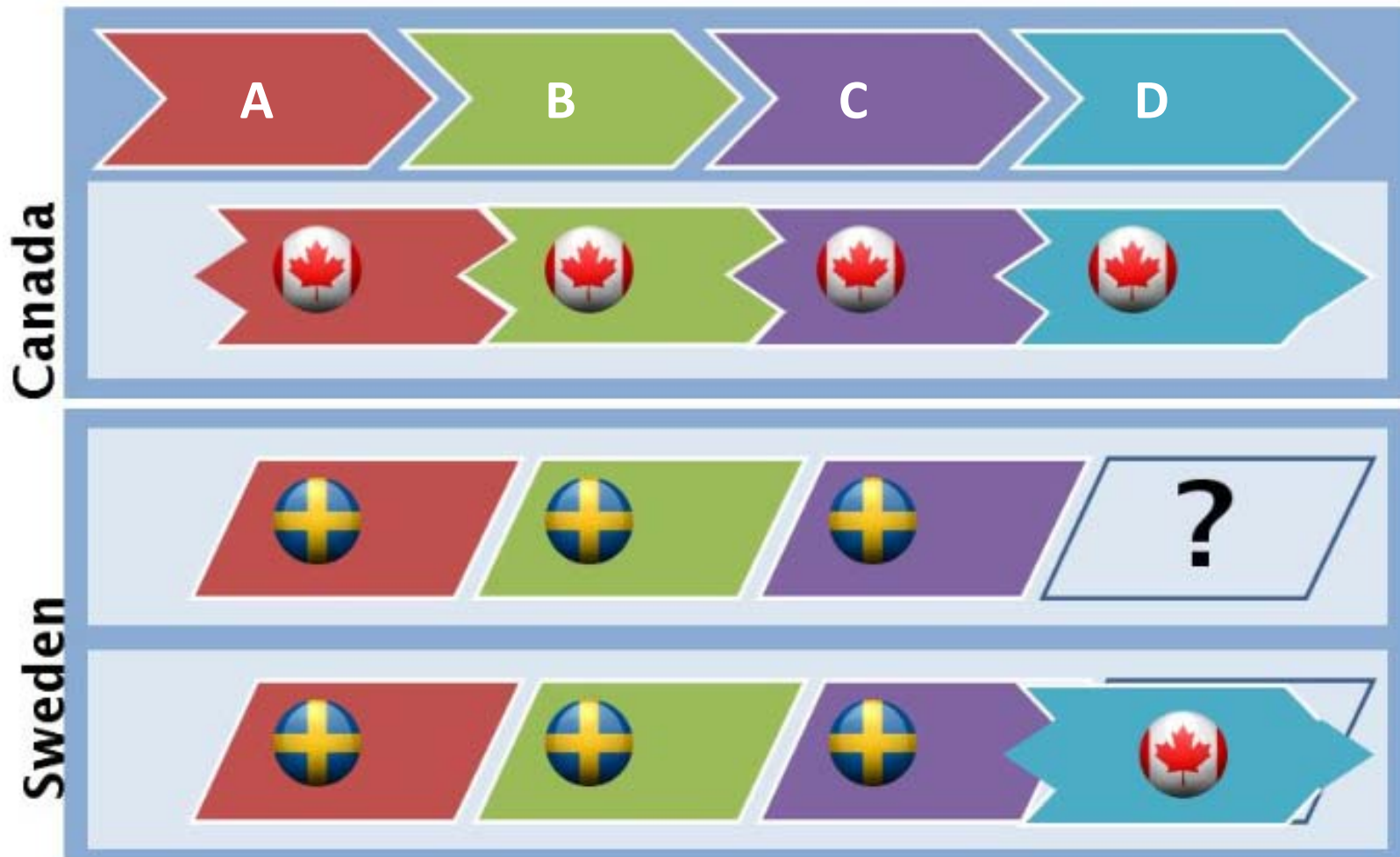
- Ensures consistency of reporting and use
- Allows data to be integrated across domains (e.g. age and geography)
- Allows for comparisons across countries



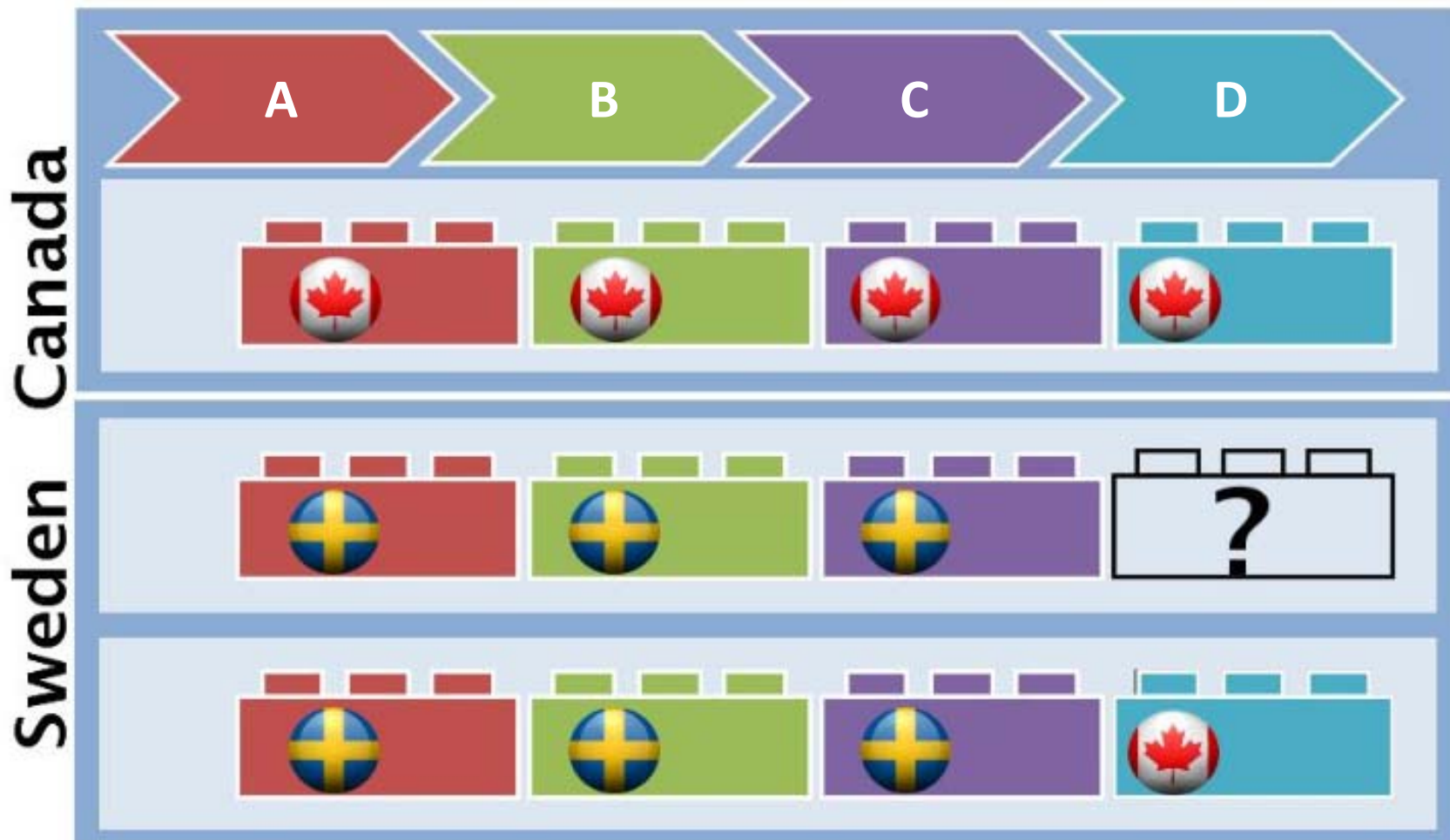


Modernisation of Statistical Production and Services

Countries working alone can not share.



... countries working together can.



Common Statistical Production Architecture

Business Architecture

- General Statistical Business Process Model – GSBPM

Information Architecture

- General Statistical Information Model – GSIM

Application Architecture

- Data Documentation Initiative – DDI
- Statistical Data and Metadata Exchange – SDMX

Technology Architecture

- National Statistical Office - NSO

Common Language / Terminology



Geospatial Data
and Metadata



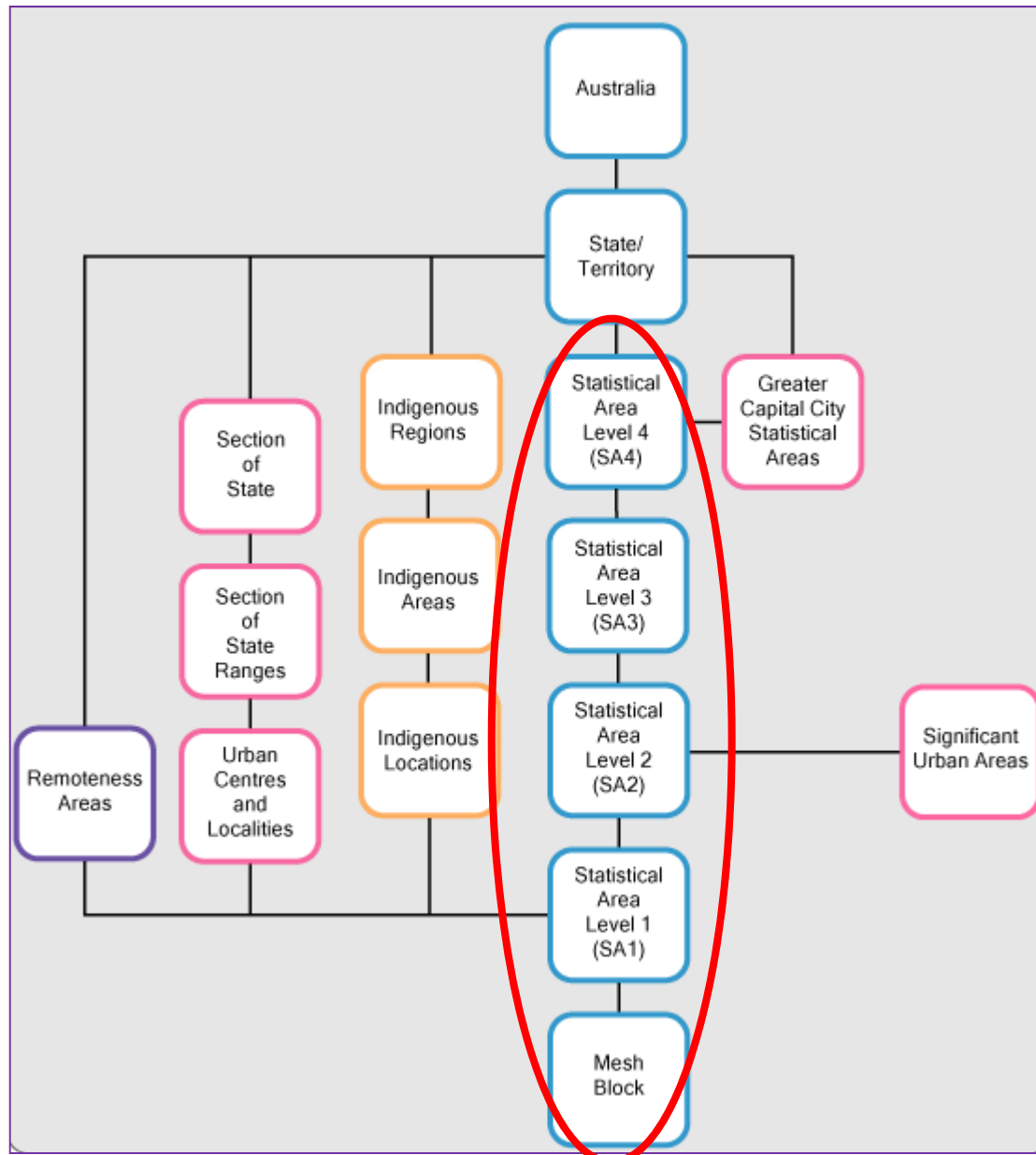
Connecting statistics to place


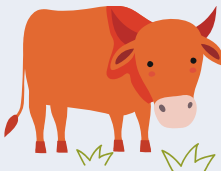






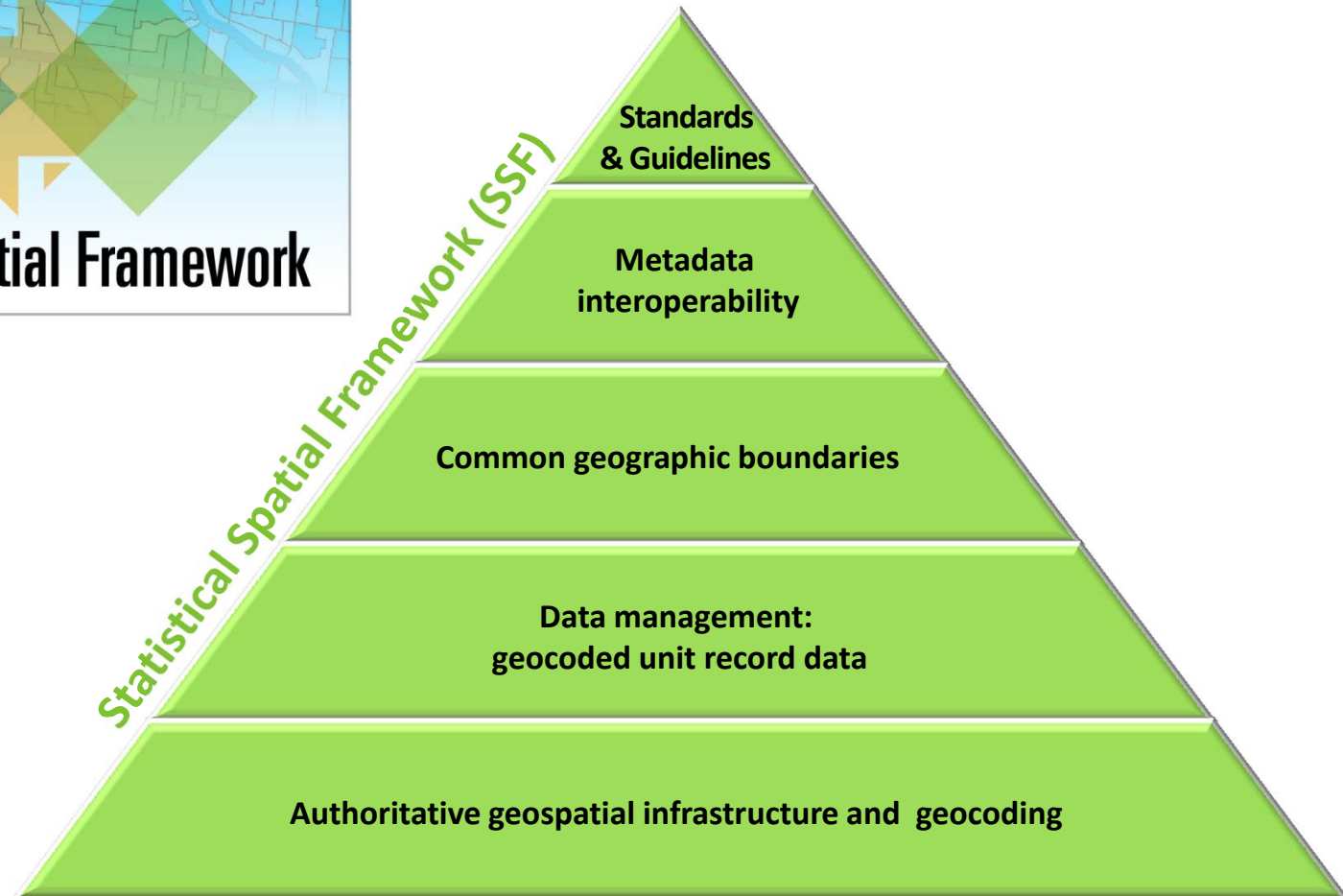
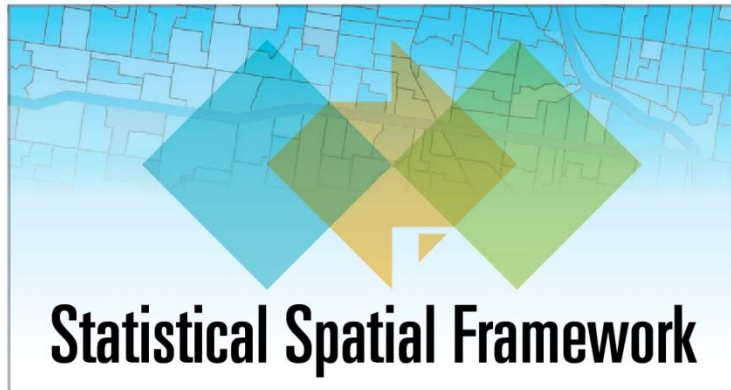


Census dwellings address coding

- Autocoding using GNAF
 - 91.3% direct coding
 - 94.2% with reprocessing
- Additional online clerical coding using GNAF and census collector maps
 - 96.7% direct clerical
 - 97.0% with reprocessing
- Intense clerical review and imputation
 - 100%







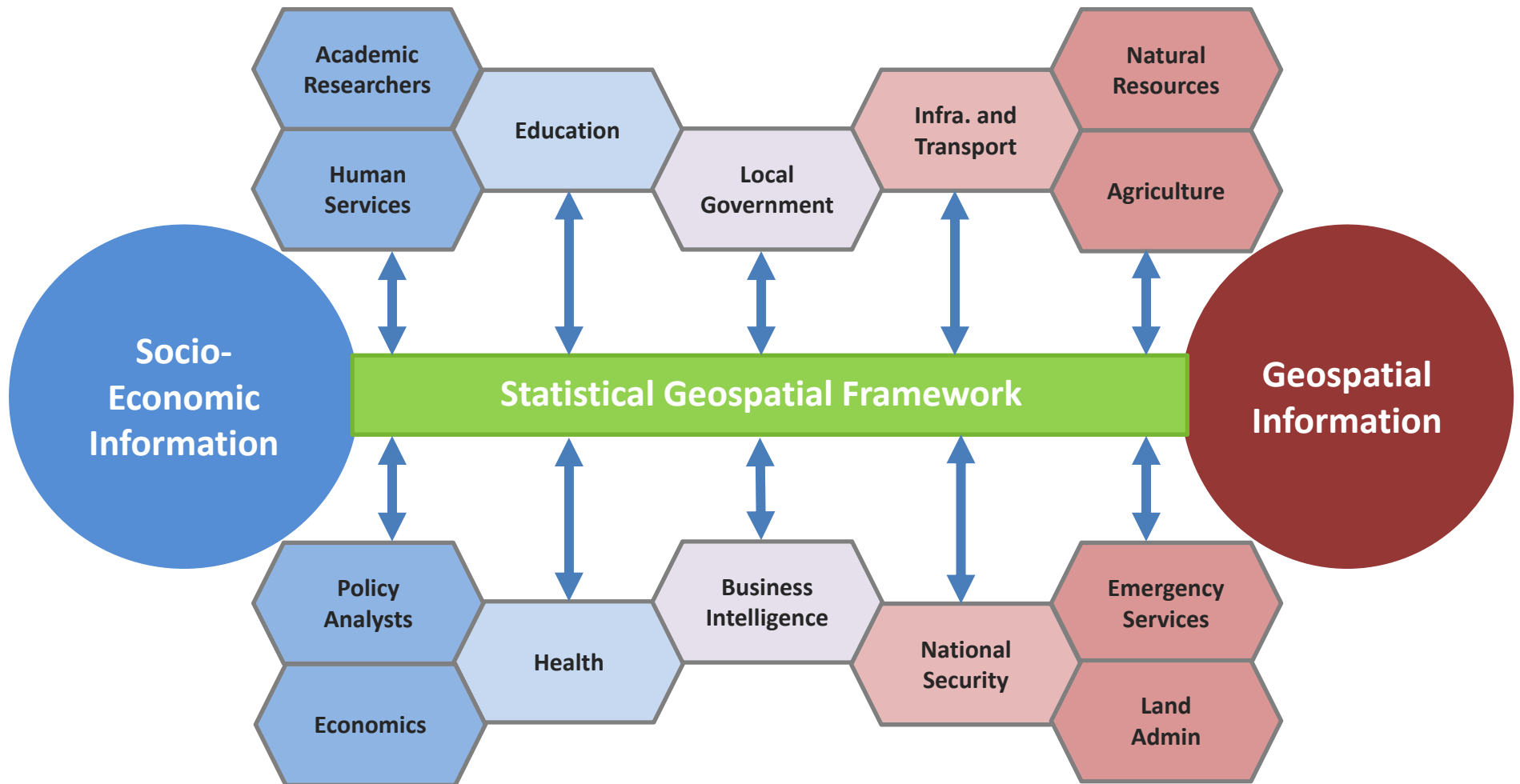
Connecting the statistics and geospatial communities



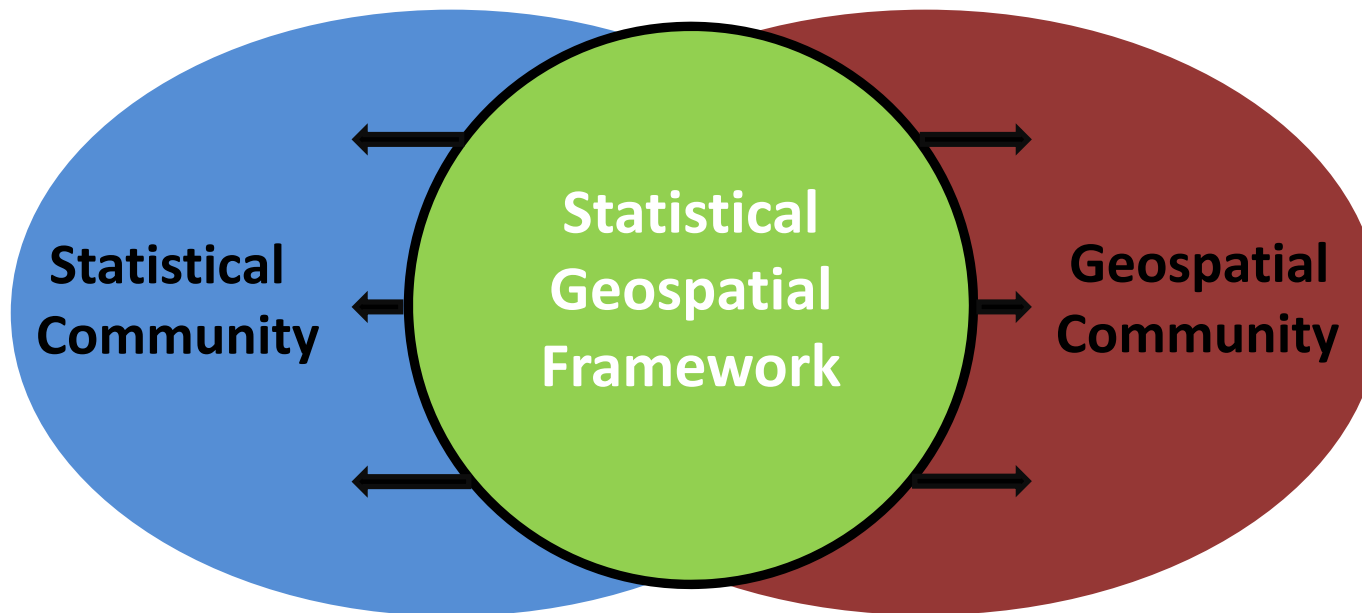
‘The work on global geospatial information management over the past two to three years has confirmed that one of the key challenges is a better integration of geospatial and statistical information as a basis for sound and evidence-based decision-making.’

Secretary General, UN Economic and Social Council, 2012.

Continuum of user needs



Data producer environment



Develop a global framework

UN Economic and Social Council (ECOSOC)

UN Statistical Commission (UNSC)

- Programme review – proposed a global Statistical Spatial Framework

UN Committee of Experts on Global Geospatial Information Management (UN-GGIM)

- List of nine issues included 'linking of spatial to statistics'

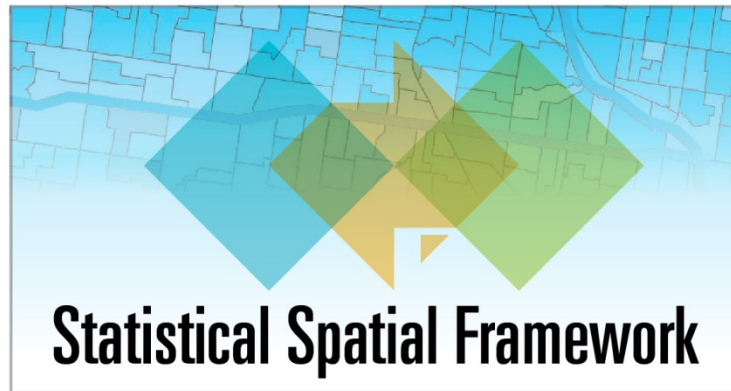
UN Expert Group – Integration of Statistical and Geospatial Information (UN EG-ISGI)

UN Global Forum and other forums



Collaboration opportunities

- Completing the statistical picture globally with environmental information
- Integrating geospatial metadata with statistical architecture and standards
- Identifying and clarifying terminology differences between the two communities
- Manage privacy issues with geospatially enabled statistics
- Developing a global statistical geospatial framework to enable integration of information



Statistical Spatial Framework

For more information

E-mail: geography@abs.gov.au

Visit: www.nss.gov.au